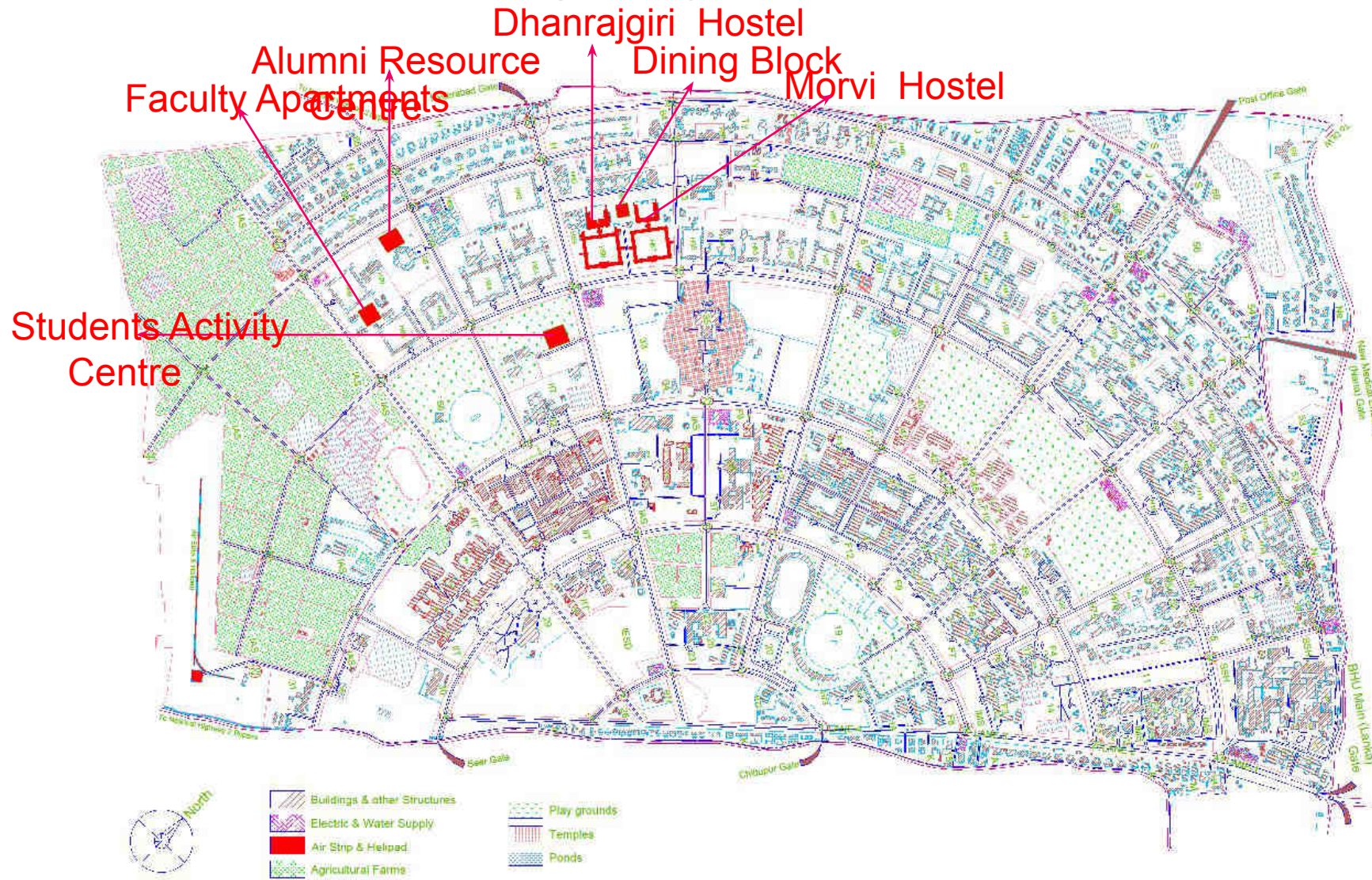


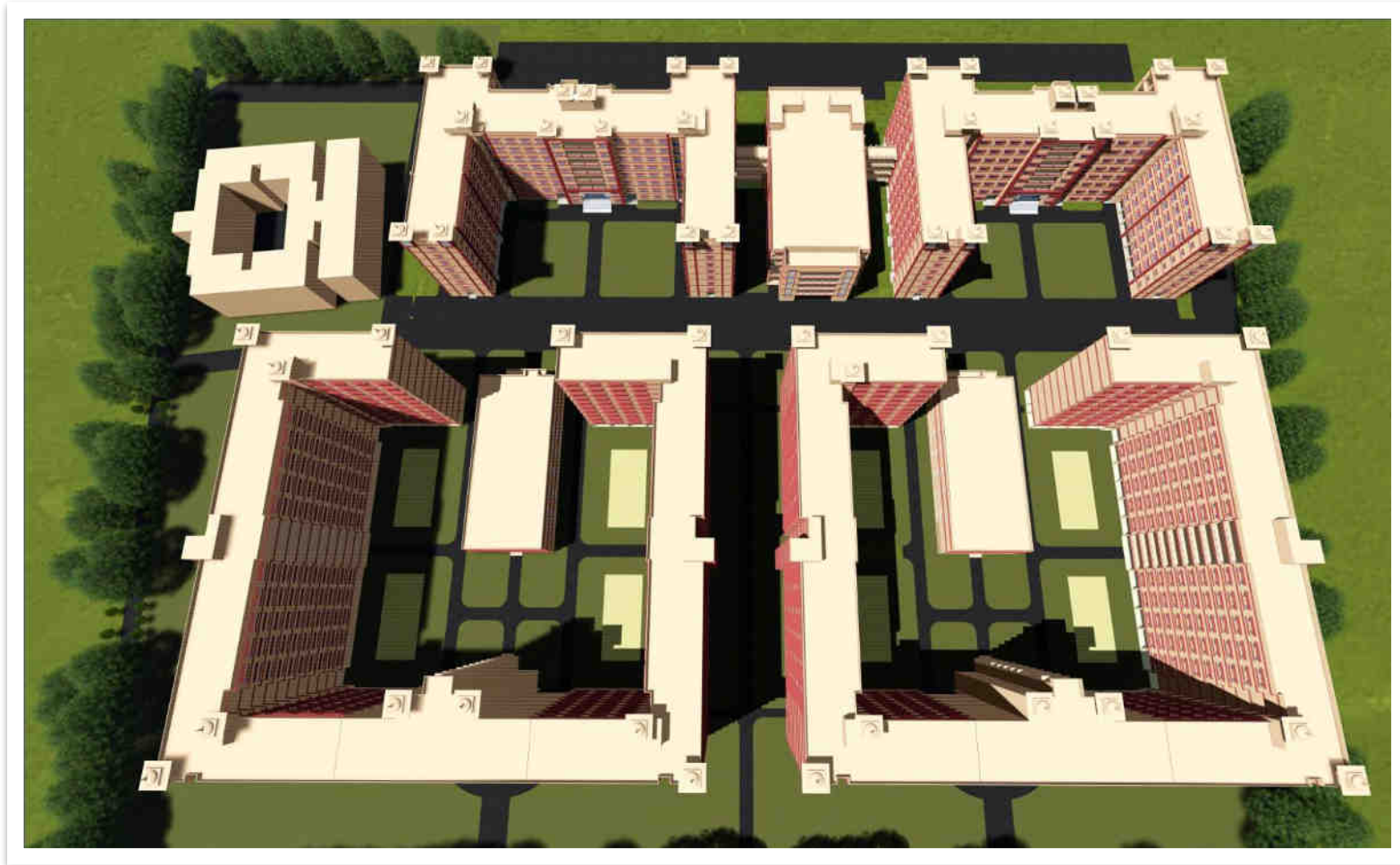
Upcoming Projects of IIT (BHU)



MASTER PLAN

PROJECT ARCHITECTS
S R I S H T I

DHANRAJGIRI & MORVI HOSTELS



DHANRAJGIRI & MORVI HOSTELS

PROJECT ARCHITECTS

S R I S H T I

DHANRAJGIRI HOSTEL



With the growing number of seats in various branches of Engineering, student population has been steadily rising. The old Hostel buildings are proving to be insufficient for the heavy demand in student housing. It is being realised that going vertical is the solution.

DHANRAJGIRI HOSTEL



DhanrajGiri Hostel – II is a Stilt + 7 floors hostel building proposed right behind the old existing Dhanrajgiri Hostel. It has a total of 400 double-seated rooms and can accommodate 800 male students. The building has been planned as a state-of-the-art structure with common facilities for indoor games, TV Rooms and other group activities. Major portion of Ground Floor is in the form of Stilts for parking of bicycles.

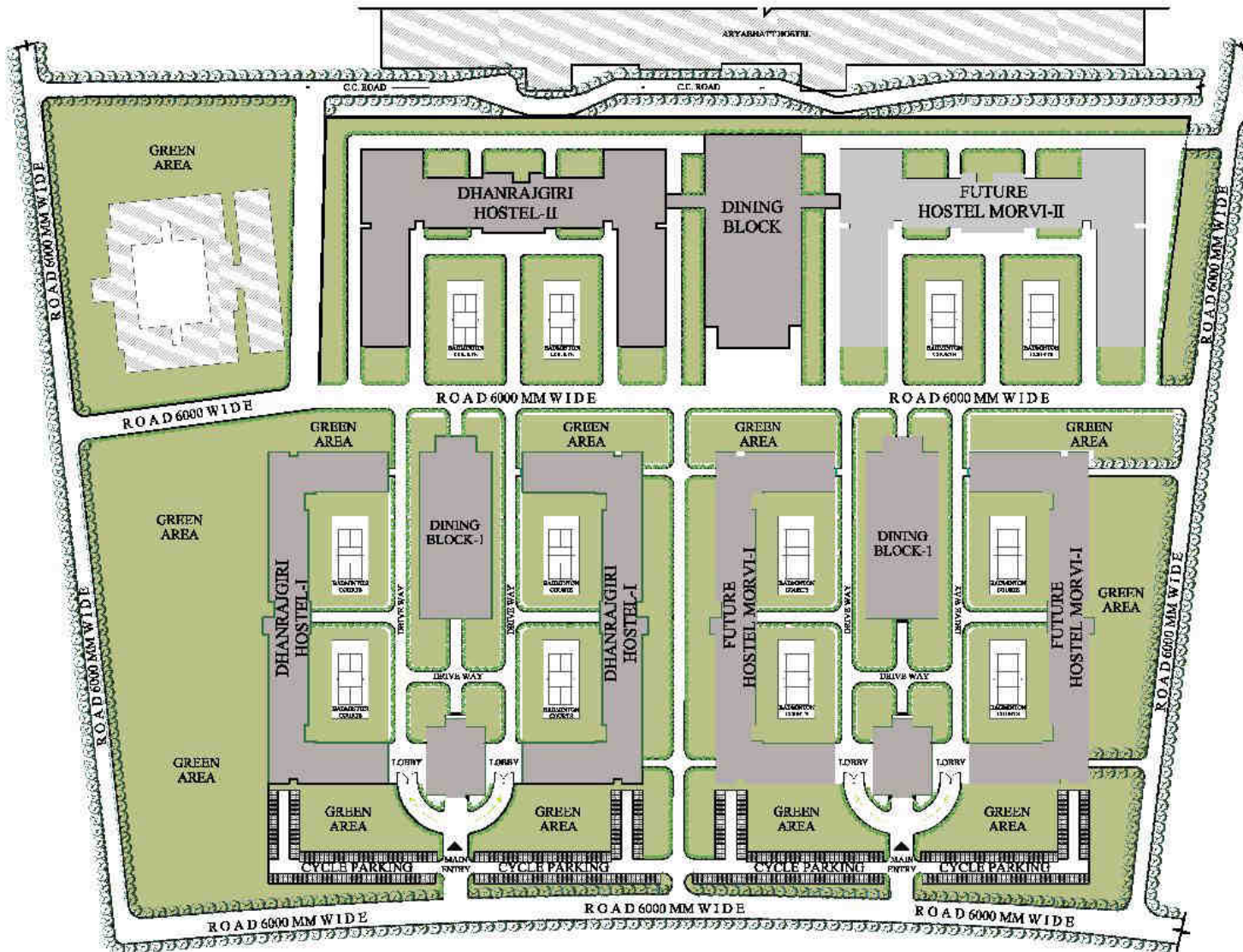
MORVI HOSTEL



An adjoining five-storey block serves as the Dining Hall which can accommodate 320 students per floor at a time. Upper floors shall accommodate common room and indoor activities including a Gym and utilities like Laundromat.

The buildings are well-equipped with elevators and fire-fighting installations.

SITE PLAN

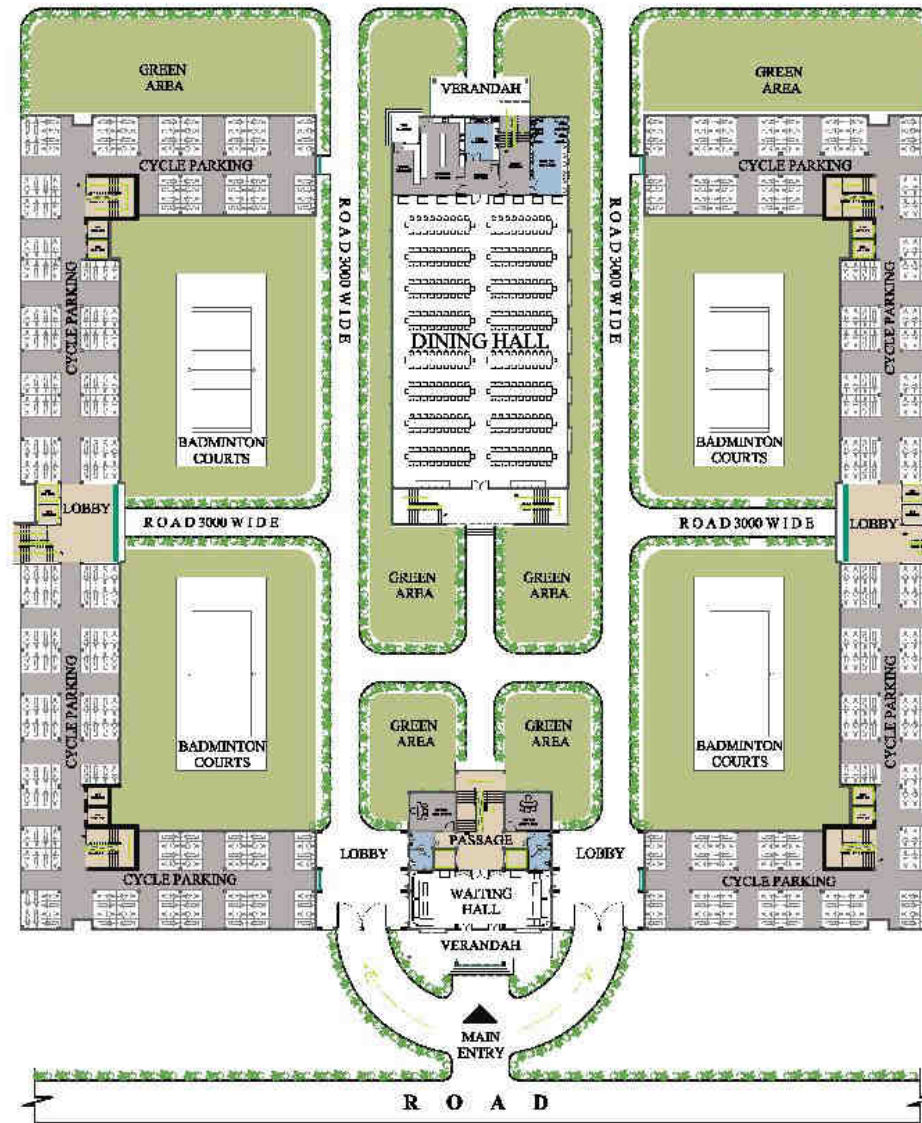


DHANRAJGIRI & MORVI HOSTELS

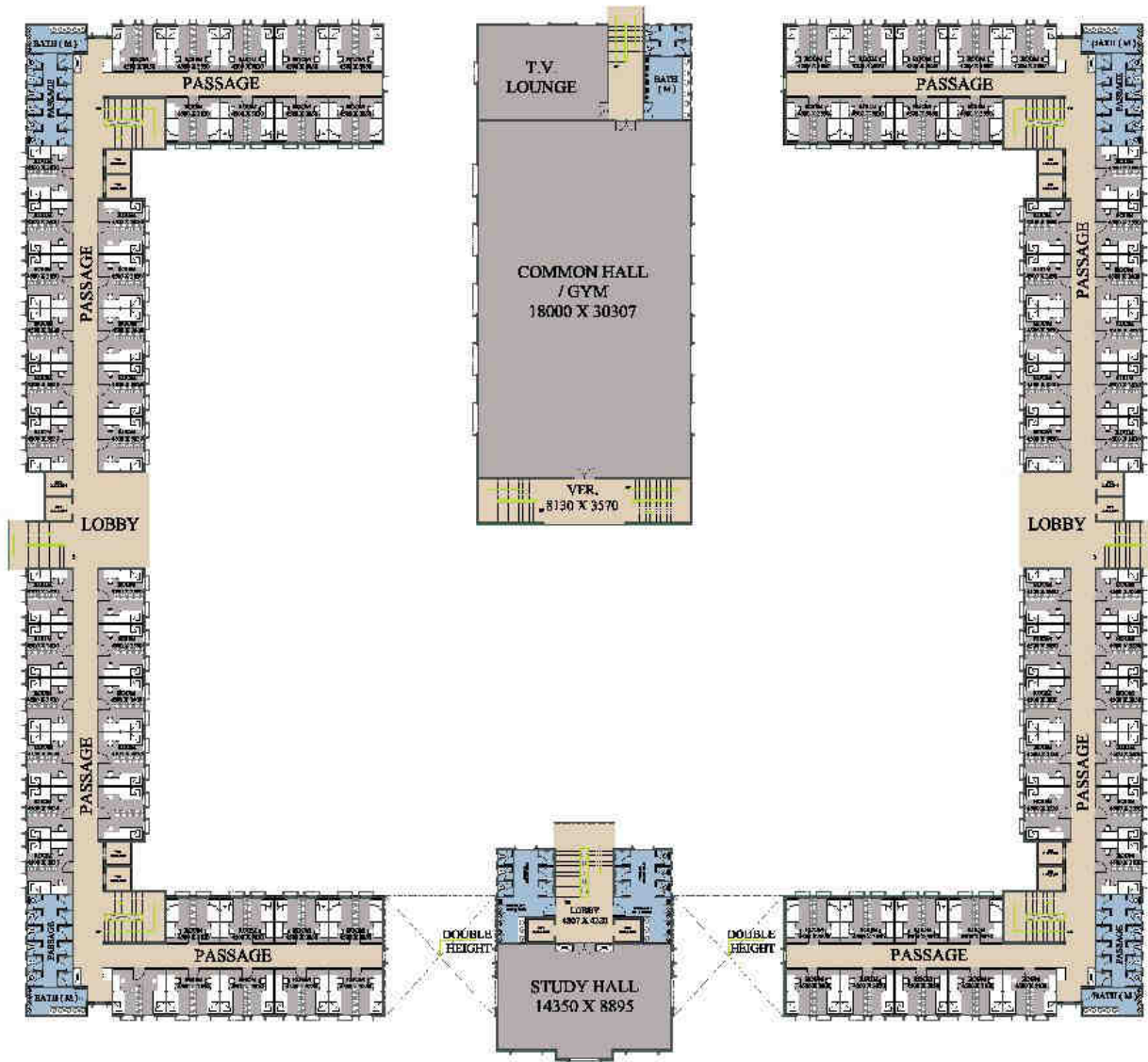
PROJECT ARCHITECTS

S R I S H T I

STILT FLOOR PLAN



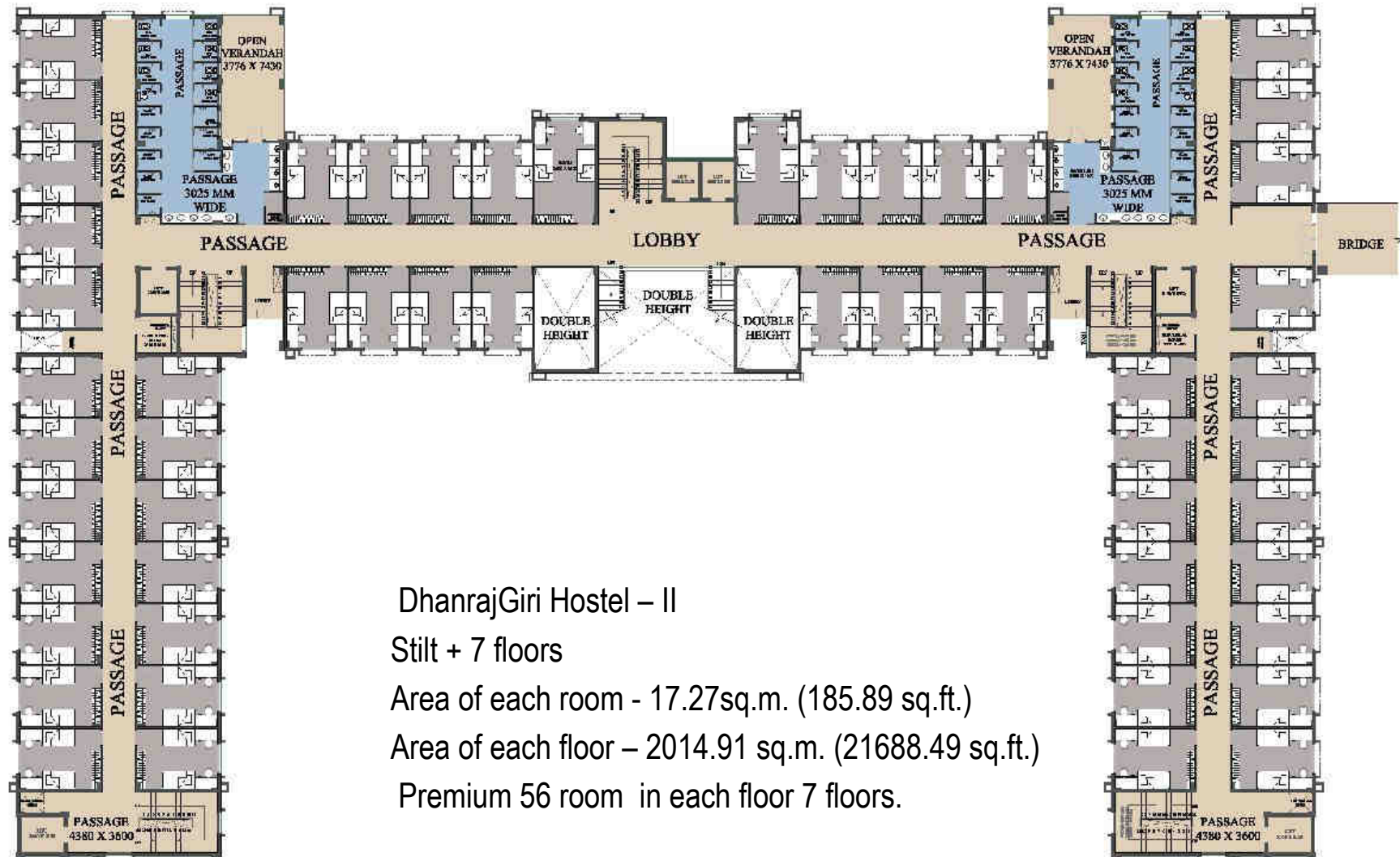
TYPICAL FLOOR PLAN



STILT FLOOR PLAN



FIRST FLOOR PLAN



Dhanrajgiri Hostel – II

Stilt + 7 floors

Area of each room - 17.27sq.m. (185.89 sq.ft.)

Area of each floor – 2014.91 sq.m. (21688.49 sq.ft.)

Premium 56 room in each floor 7 floors.